

# Compare angles

1 Here are some angles.

a) Circle the angle that is greater than a right angle.



b) Circle the angle that is less than 90 degrees.



2 Draw three different angles that are less than a right angle.

Various answers.

Compare answers with a partner.

Complete the sentence.

These are all examples of acute angles.

3 Draw two different obtuse angles.

Various answers.

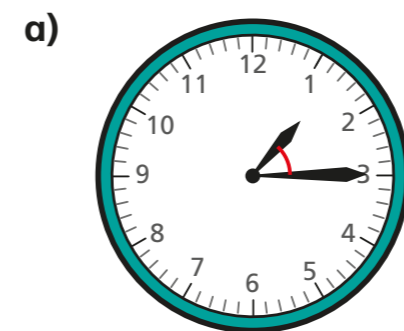
Compare answers with a partner.

Complete the sentence.

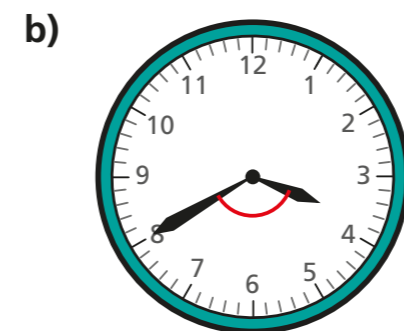
Obtuse angles are greater than  degrees

but less than  degrees.

4 Is the angle between the hands of the clock acute or obtuse?

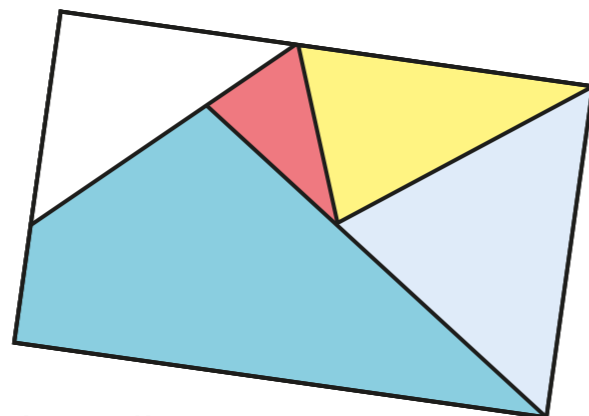


acute

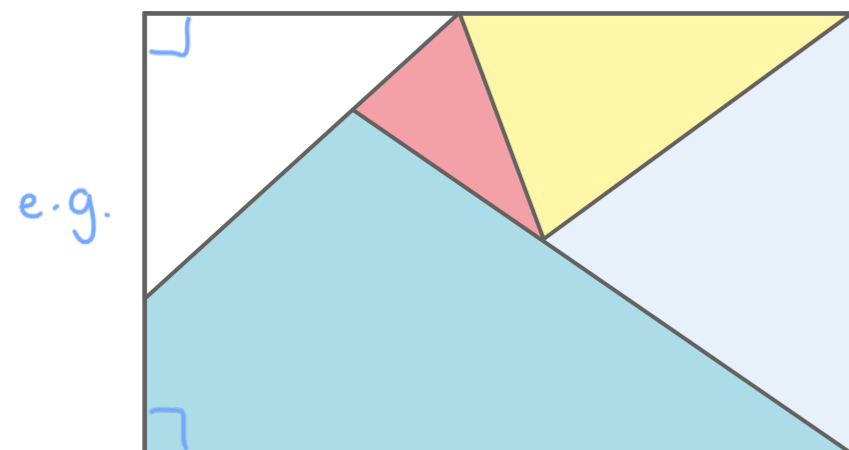


obtuse

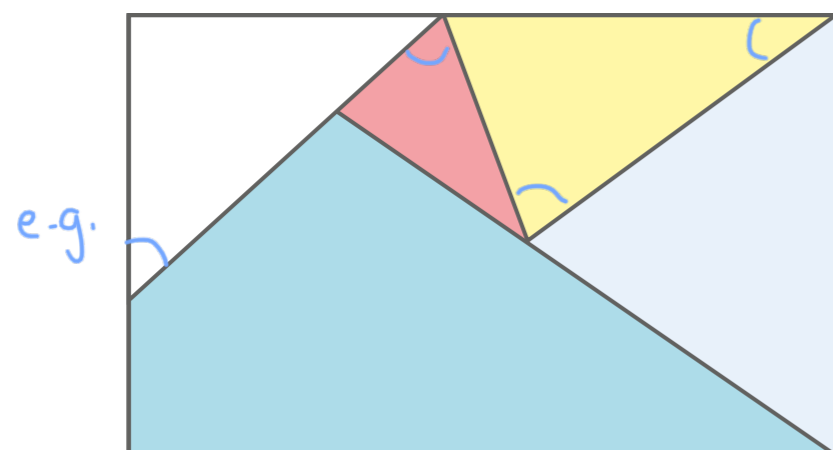
5 Here is a piece of wallpaper.



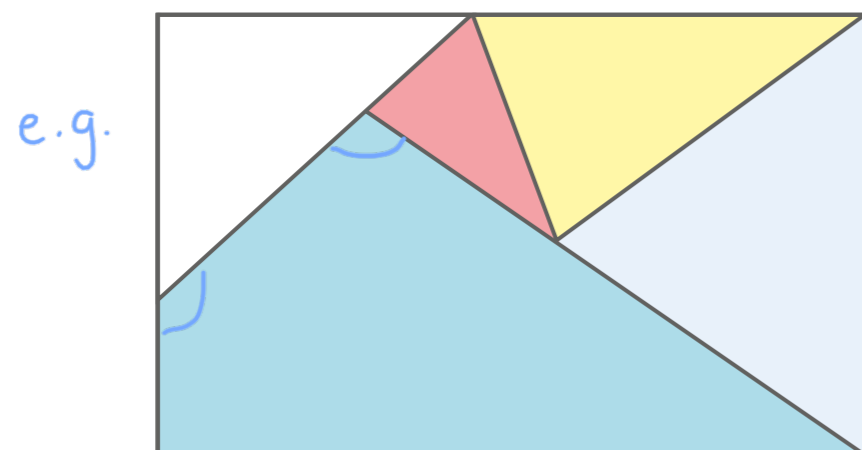
a) Mark two right angles on the wallpaper.



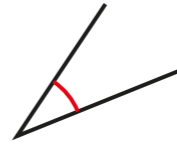

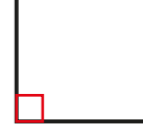
b) Mark four acute angles on the wallpaper.



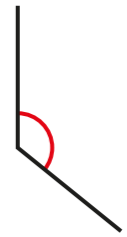


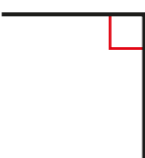


c) Mark two obtuse angles on the wallpaper.



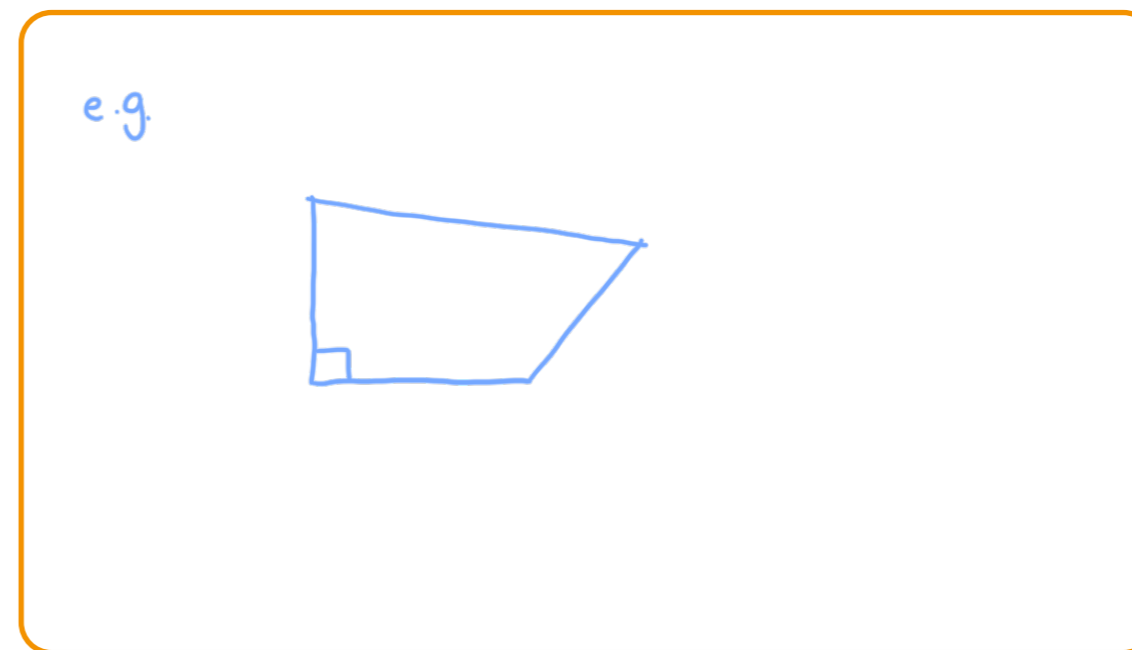
6 Write  $<$ ,  $>$  or  $=$  to compare the sizes of the angles.

a)   

b)   

c)   

7 Draw a shape that has one right angle, two acute angles and one obtuse angle.



Compare answers with a partner.

What is the same and what is different about your shapes?

